



www.scitechinc.ca

# Technical Data Sheet

## Radiance

Automotive wax/drying agent

Product # 0305

### **Product Information:**

This concentrated, cherry scented liquid wax is designed for use in hot and cold water applications in automatic car wash or wand wash facilities. It decreases drying time by improving beading of rinse water while adding lustre to car finishes. By creating a protective barrier, this wax will reduce oxidation and weathering of paint. It is ideal for short drip spaces.

### **Directions:**

This product is added in the wax or rinse cycle of the wash program. It can be diluted manually or through a metering system. Usually, 40 - 100 mL of product per car is sufficient for good water removal. An additional 30 mL per car will provide added lustre. For high volume arches, start with a dilution of 1 part product to 350 parts water. For low volume arches, start with 1 part product to 250 parts water. For self service, start with 1 part product to 300 parts water. Different concentrations should be evaluated to determine the best results since the quantity of product needed may vary with different water sources.

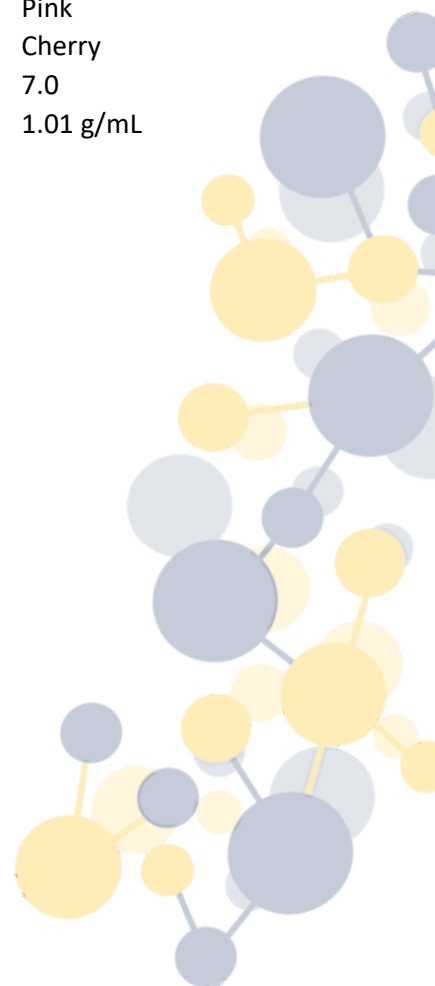
### **Product Specifications:**

State:	Liquid
Colour:	Pink
Scent:	Cherry
pH:	7.0
Specific Gravity	1.01 g/mL

### **Packaging**

Available in:

12 x 1 L	Box
4 x 4 L	Box
20 L	Pail
205 L	Drum
1000 L	Tote



**Sci-Tech Engineered Chemicals Inc.**

9902 - 90 Avenue

Morinville AB, T8R 1K7

Ph: 780.960.1200 Fx: 780.960.1201

www.scitechinc.ca