



www.scitechinc.ca

Technical Data Sheet

Porta Cleanz

Portable toilet fluid

Product # 0618

Product Information:

This concentrated, cherry scented liquid sanitizer/deodorizer is designed for use in portable toilets in RV's, buses, and porta potties at camp and construction sites. This product is easily dispersed through any system to eliminate odours at the source.

Directions:

For treatment solution, dilute product 30 - 60 mL per 4.5 L of water (1-2 oz / Gal).

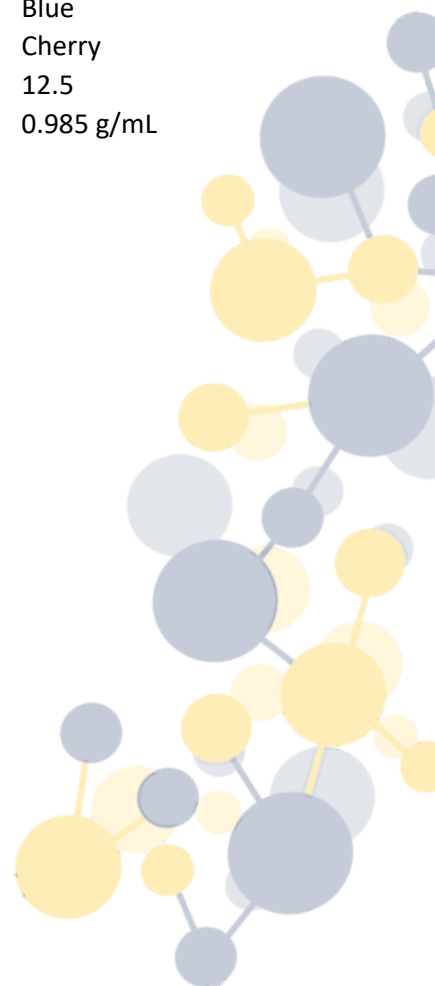
Product Specifications:

State:	Liquid
Colour:	Blue
Scent:	Cherry
pH:	12.5
Specific Gravity	0.985 g/mL

Packaging

Available in:

12 x 1L	Box
4 x 4 L	Box
20 L	Pail
205 L	Drum
1000 L	Tote



Sci-Tech Engineered Chemicals Inc.

9902 - 90 Avenue

Morinville AB, T8R 1K7

Ph: 780.960.1200 Fx: 780.960.1201

www.scitechinc.ca